

**Date:** Wednesday 27 March 2024 at 2.00 pm

**Venue:** Jim Cooke Conference Suite, Stockton Central Library, Church Road, Stockton on Tees, TS18 1TU

**Cllr Robert Cook (Chair)**  
**Cllr Lisa Evans (Vice-Chair)**

Cllr Diane Clarke OBE  
Cllr Mrs Ann McCoy  
Cllr David Reynard  
Cllr Marcus Vickers  
Carolyn Nice  
Sarah Bowman-Abouna  
Jon Carling  
Dominic Gardner  
Jonathan Slade

Cllr Dan Fagan  
Cllr Steve Nelson  
Cllr Stephen Richardson  
Cllr Sylvia Walmsley  
Elaine Redding  
Fiona Adamson  
David Gallagher  
Julie Gillon  
Peter Smith

## **AGENDA**

- 1 Evacuation Procedure** (Pages 7 - 8)
- 2 Apologies for absence**
- 3 Declarations of interest**
- 4 Minutes**  
  
To approve the minutes of the last meeting held on  
Wednesday 31<sup>st</sup> January 2024 – To Follow
- 5 Better Care Fund Update** (Pages 9 - 10)
- 6 Domestic Abuse Steering Group Update** (Pages 11 - 22)
- 7 Pharmacy Needs Update** (Pages 23 - 28)
- 8 Discussion Following Health & Wellbeing Workshops**
- 9 Forward Plan** (Pages 29 - 30)

**Members of the Public - Rights to Attend Meeting**

With the exception of any item identified above as containing exempt or confidential information under the Local Government Act 1972 Section 100A(4), members of the public are entitled to attend this meeting and/or have access to the agenda papers.

Persons wishing to obtain any further information on this meeting, including the opportunities available for any member of the public to speak at the meeting; or for details of access to the meeting for disabled people, please

Contact: Michael Henderson on email [Michael.henderson@stockton.gov.uk](mailto:Michael.henderson@stockton.gov.uk)

**KEY - Declarable interests are:-**

- Disclosable Pecuniary Interests (DPI's)
- Other Registerable Interests (ORI's)
- Non Registerable Interests (NRI's)

**Members – Declaration of Interest Guidance**



**Table 1 - Disclosable Pecuniary Interests**

Subject	Description
<b>Employment, office, trade, profession or vocation</b>	Any employment, office, trade, profession or vocation carried on for profit or gain
<b>Sponsorship</b>	Any payment or provision of any other financial benefit (other than from the council) made to the councillor during the previous 12-month period for expenses incurred by him/her in carrying out his/her duties as a councillor, or towards his/her election expenses. This includes any payment or financial benefit from a trade union within the meaning of the Trade Union and Labour Relations (Consolidation) Act 1992.
<b>Contracts</b>	Any contract made between the councillor or his/her spouse or civil partner or the person with whom the councillor is living as if they were spouses/civil partners (or a firm in which such person is a partner, or an incorporated body of which such person is a director* or a body that such person has a beneficial interest in the securities of*) and the council — (a) under which goods or services are to be provided or works are to be executed; and (b) which has not been fully discharged.
<b>Land and property</b>	Any beneficial interest in land which is within the area of the council. 'Land' excludes an easement, servitude, interest or right in or over land which does not give the councillor or his/her spouse or civil partner or the person with whom the councillor is living as if they were spouses/ civil partners (alone or jointly with another) a right to occupy or to receive income.
<b>Licences</b>	Any licence (alone or jointly with others) to occupy land in the area of the council for a month or longer.
<b>Corporate tenancies</b>	Any tenancy where (to the councillor's knowledge)— (a) the landlord is the council; and (b) the tenant is a body that the councillor, or his/her spouse or civil partner or the person with whom the councillor is living as if they were spouses/ civil partners is a partner of or a director* of or has a beneficial interest in the securities* of.
<b>Securities</b>	Any beneficial interest in securities* of a body where— (a) that body (to the councillor's knowledge) has a place of business or land in the area of the council; and (b) either— (i) the total nominal value of the securities* exceeds £25,000 or one hundredth of the total issued share capital of that body; or (ii) if the share capital of that body is of more than one class, the total nominal value of the shares of any one class in which the councillor, or his/ her spouse or civil partner or the person with whom the councillor is living as if they were spouses/civil partners have a beneficial interest exceeds one hundredth of the total issued share capital of that class.

\* 'director' includes a member of the committee of management of an industrial and provident society.

\* 'securities' means shares, debentures, debenture stock, loan stock, bonds, units of a collective investment scheme within the meaning of the Financial Services and Markets Act 2000 and other securities of any description, other than money deposited with a building society.

## Table 2 – Other Registerable Interest

You must register as an Other Registrable Interest:

- a) any unpaid directorships
- b) any body of which you are a member or are in a position of general control or management and to which you are nominated or appointed by your authority
- c) any body
  - (i) exercising functions of a public nature
  - (ii) directed to charitable purposes or
  - (iii) one of whose principal purposes includes the influence of public opinion or policy (including any political party or trade union) of which you are a member or in a position of general control or management

This page is intentionally left blank

## **Jim Cooke Conference Suite, Stockton Central Library** **Evacuation Procedure & Housekeeping**

If the fire or bomb alarm should sound please exit by the nearest emergency exit. The Fire alarm is a continuous ring and the Bomb alarm is the same as the fire alarm however it is an intermittent ring.

If the Fire Alarm rings exit through the nearest available emergency exit and form up in Municipal Buildings Car Park.

The assembly point for everyone if the Bomb alarm is sounded is the car park at the rear of Splash on Church Road.

The emergency exits are located via the doors between the 2 projector screens. The key coded emergency exit door will automatically disengage when the alarm sounds.

The Toilets are located on the Ground floor corridor of Municipal Buildings next to the emergency exit. Both the ladies and gents toilets are located on the right hand side.

### **Microphones**

During the meeting, members of the Committee, and officers in attendance, will have access to a microphone. Please use the microphones, when directed to speak by the Chair, to ensure you are heard by the Committee.

This page is intentionally left blank



## **AGENDA ITEM**

### **REPORT TO HEALTH AND WELLBEING BOARD**

**27<sup>th</sup> March 2024**

### **REPORT OF: Better Care Fund (BCF)**

## **STOCKTON BETTER CARE FUND UPDATE**

### **Stockton-on-Tees BCF Quarter 3 report**

## **SUMMARY**

The purpose of this paper is to provide the Health and Wellbeing Board with an update on the submission of the Stockton-on-Tees BCF Quarter 3 report.

## **RECOMMENDATIONS**

### **The Health and Wellbeing Board are asked to:**

1. Note the submission of the Stockton-on-Tees BCF Quarter 3 report to NHS England as part of the reporting requirements set out in the BCF Planning Requirements 23-25.

## **Background**

The Better Care Fund (BCF) reporting requirements are set out in the BCF Planning Requirements document for 2023-25, which supports the aims of the BCF Policy Framework and the BCF programme; jointly led and developed by the national partners Department of Health (DHSC), Department for Levelling Up, Housing and Communities (DLUHC), NHS England (NHSE), Local Government Association (LGA), working with the Association of Directors of Adult Social Services (ADASS).

The key purposes of BCF reporting are:

- 1) To confirm the status of continued compliance against the requirements of the fund (BCF)
- 2) In Quarter 2 to refresh capacity and demand plans, and in Quarter 3 to confirm activity to date, where BCF funded schemes include output estimates, and at the End of Year actual income and expenditure in BCF plans
- 3) To provide information from local areas on challenges, achievements and support needs in progressing the delivery of BCF plans, including performance metrics
- 4) To enable the use of this information for national partners to inform future direction and for local areas to inform improvements

## Details

This paper consists of the quarter 3 report which was agreed by the BCF Delivery Group and signed off by the Pooled Budget Partnership Board on behalf of the Health and Wellbeing Board. It was submitted to the NHS England on 9<sup>th</sup> February 2024.



2023-24%20Q3%20f  
inal.xlsx

Yvonne Cheung, Dementia Service Development Manager

[Yvonne.cheung@stockton.gov.uk](mailto:Yvonne.cheung@stockton.gov.uk)

Emma Champley, Assistant Director Adult Strategy and Transformation

[Emma.Champley@stockton.gov.uk](mailto:Emma.Champley@stockton.gov.uk)

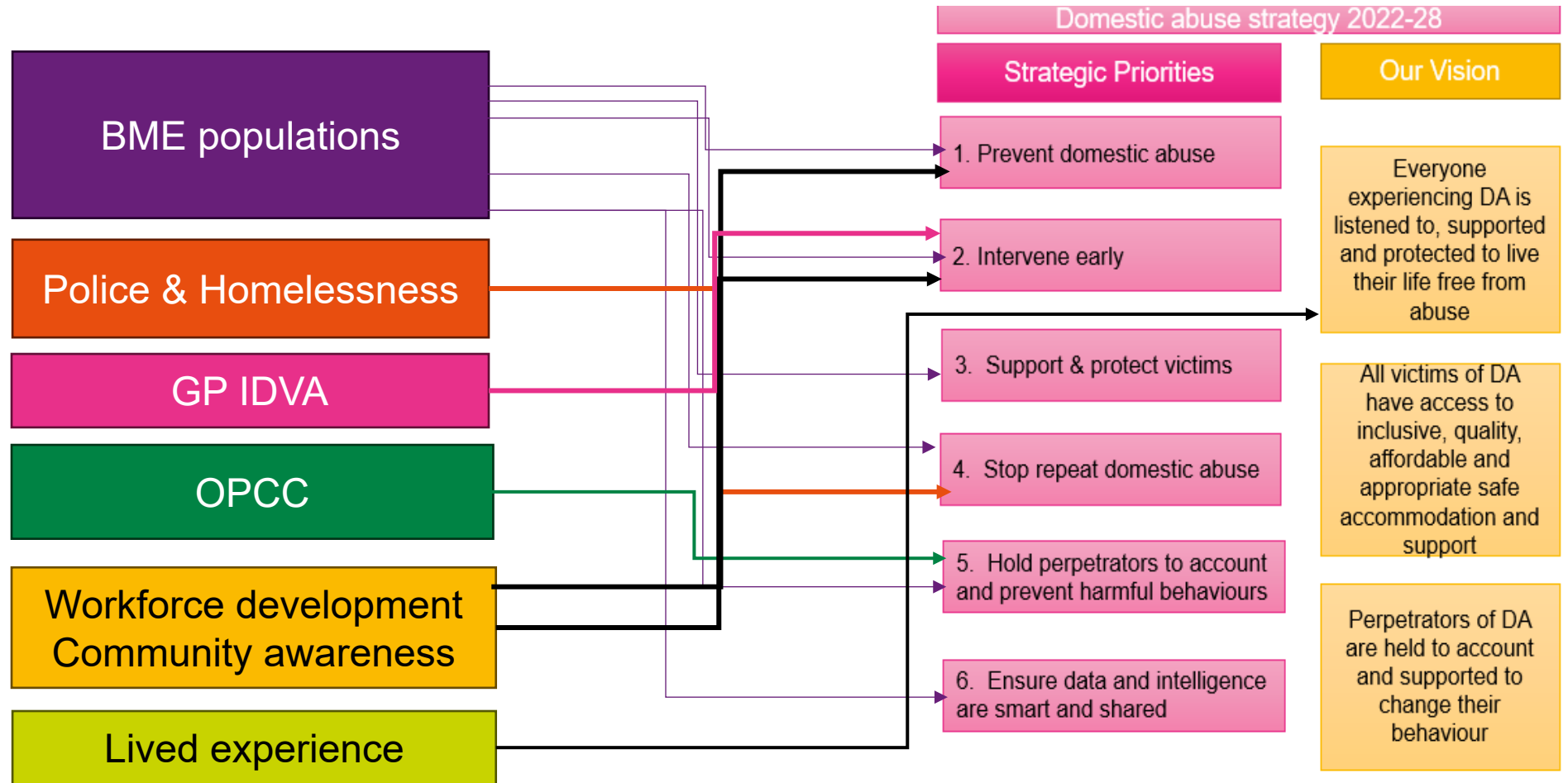
Kathryn Warnock, Head of Commissioning and Strategy, NHS Tees Valley Clinical Commissioning Group

[kathryn.warnock@nhs.net](mailto:kathryn.warnock@nhs.net)

# Domestic Abuse Steering Group

Update March 2024,  
Mandy MacKinnon

# Delivering on strategic priorities



# Bridging the Gap report

- **OPCC** funded project
- Engage with community groups working with BME
- Identify needs of BME communities
- Support communities to identify domestic abuse and promote sources of help
- Understand and address barriers to accessing services
  
- Cultural and language barriers
- Working with grass roots organisations

# Service & pathway improvements

- Links between **Police and Homelessness** team re DVPOs
  - Perpetrators may present as homeless
- **GP IDVA**
  - Availability at GP practices
  - Increased GP referrals
  - Hospital to community pathway
- **Harbour worker in Homelessness Team**
- Exploring opportunities for a *support in safe accommodation lens* to temporary supported accommodation

# Tees approach to perpetrators

- Operational and strategic response
- **OPCC** leading the development of a Tees strategy
- Recognition of the spectrum of harm and risk
- Acknowledgement of the challenges of policing DVPO
- Opportunities in police custody
- Opportunities in probation

# Workforce development

A tiered training programme has been developed by **Harbour** to provide basic and specialist training:

- Level 1
- Level 2
- Children and domestic abuse
- Domestic abuse and trauma



# Community awareness

Delivered by **Harbour**

1. The 'Ask me' project is being implemented to challenge myths and victim blaming
2. Agreement to roll out the Ask for Angela programme to libraries across the borough

# Lived experience

- Recognition of the importance and benefits of working with people with lived experience
- Exploration of ways of doing so
- Local expertise e.g. Making it Real Board
- National expertise, links with the Office of the Domestic Abuse Commissioner
- Exploring the development of a Charter for the DASG

Priority Activities	Indicator (owner)	Action Plan themes	System Outcome (measure)	Strategic Priorities	Our Vision
Specialist support for victim survivors of domestic abuse	% individuals engage from starting to completing intervention with DA service (Harbour)	<ol style="list-style-type: none"> <li>Education and Children &amp; Young People</li> <li>Workplaces (employers)</li> <li>Community awareness</li> <li>Workforce development</li> <li>Commissioning</li> <li>best practice in service delivery</li> <li>Pathway development (stop repeats)</li> <li>Engagement in the criminal justice system</li> <li>Work with repeat victims</li> <li>Perpetrator interventions</li> <li>Supporting families</li> <li>Supporting victim survivors</li> <li>Shared learning</li> <li>Data collection</li> <li>Data presentation</li> </ol>	Reduced proportion of repeat victims of domestic abuse (Police data)	1. Prevent domestic abuse	Everyone experiencing DA is listened to, supported and protected to live their life free from abuse
Safe accommodation and support for victim survivors of domestic abuse	% individuals and families successfully move on from safe accommodation within 12 weeks (Harbour)		Reduced prevalence of domestic abuse	2. Intervene early	
Specialist programmes for perpetrators of domestic abuse	% individuals and families supported to feel safe in their own homes (SBC Homelessness Team)		An empowered and enabled workforce (self-reported confidence)	3. Support & protect victims	All victims of DA have access to inclusive, quality, affordable and appropriate safe accommodation and support
Implement a workforce development plan			Increased community awareness of domestic abuse (School survey?)	4. Stop repeat domestic abuse	
			Reduced levels of harm in communities (Cambridge Harm Index)	5. Hold perpetrators to account and prevent harmful behaviours	Perpetrators of DA are held to account and supported to change their behaviour
				6. Ensure data and intelligence are smart and shared	



# Ask of the HWBB

- Support to develop the outcomes framework
  - Being smart with the use of data across the system to monitor progress
- Continue to support workforce development
  - Encouragement and release of staff
- Continue to support improvement of collaborative working
  - Ease of access to joined up support
  - Shared intelligence



This page is intentionally left blank

## AGENDA ITEM

### REPORT TO HEALTH AND WELLBEING BOARD

27 March 2024

### REPORT OF THE DIRECTOR OF PUBLIC HEALTH

## Pharmaceutical Needs Assessment (PNA) Update

### SUMMARY

This report serves to notify the HWB that the statutory review of the 2022 Pharmaceutical Needs Assessment has now commenced and an updated PNA is now due to be published by 1<sup>st</sup> October 2025.

In the interim, the HWB is required to keep the PNA up to date by maintaining the map of pharmaceutical services, assessing any on-going changes which might impact pharmaceutical need or require publication of a Supplementary Statement.

A review of the existing PNA has identified some changes in the availability of pharmaceutical services. The Director of Public Health has prepared an updated map of pharmaceutical services on behalf of the HWB. This will be published on the Health and Wellbeing Board website.

### RECOMMENDATIONS

1. To note the existing 2022 PNA is now under review.
2. To note the updated map which will be published on the Stockton-on-Tees website
3. To note the changes in ownership, pharmacy closure and change in opening hours of 100 hour pharmacies
4. To note the establishment of the PNA Steering Group to oversee the review of the existing PNA and publication of an updated PNA by October 2025

### DETAIL

1. The Stockton-on-Tees Health and Wellbeing Board (HWB) published its first Pharmaceutical Needs Assessment (PNA) on 25 March 2015, in accordance with the statutory duty to do so and published subsequent updates in 2018 and 2022.
2. The legislation that describes the HWB's duties in this regard is the **National Health Service (Pharmaceutical and Local Pharmaceutical Services) Regulations 2013<sup>i</sup>** (as amended). As well as describing what each PNA was required to consider when they were first developed and published, these 2013 Regulations also describe how each local Assessment must be maintained by the HWB.
3. In accordance with this, you will be aware that a full revised assessment of the Pharmaceutical Needs Assessment is due to be published by 1<sup>st</sup> October 2025
4. In the interim, the HWB is required to keep the PNA up to date by maintaining the map of pharmaceutical services, assessing any on-going changes which might impact pharmaceutical need or require publication of a Supplementary Statement.
5. The following changes to availability of pharmaceutical services are noted

## **PHARMACY CLOSURES**

The following pharmacy closed on 16<sup>th</sup> March 2024.

Boots UK Ltd, 12 Wrightson House, Mitchell Avenue, Thornaby, Stockton-On-Tees, TS17 9EP

The Pharmacy provided the following pharmaceutical services; essential services, advanced services (Pharmacy First, NMS, Flu Immunisation, Emergency Supply) and Public Health Commissioned Services – Supervised Consumption, Condom Supply, Stop Smoking and EHC.

## **CHANGES IN OWNERSHIP**

31/1/24 The pharmacy trading as Pharmacy 365, 161-162 High Street, Stockton-on-Tees, Cleveland, TS18 1PL changed ownership to Bestway National Chemists Ltd trading as Well

31/1/24 The pharmacy trading as Norchem, Queens Park Surgery, Farrer Street, Stockton-on-Tees, Cleveland, TS18 2AW changed ownership to Bestway National Chemists Ltd trading as Well

1/2/24 The pharmacy trading as Well, 70 Bishopton Lane, Stockton-on-Tees, Cleveland, TS18 2AJ changed ownership to Pyramid Pharma 7 Ltd trading as Stockton Pharmacy

20/2/24 The pharmacy trading as Rowlands 106 Yarm Lane, Stockton on Tees, TS18 1YE changed ownership to Sharief Healthcare Limited trading as Allied Pharmacy Yarm Lane

## **CHANGES TO PHARMACY OPENING HOURS**

On 25<sup>th</sup> May 2023 regulatory changes were made to allow existing 100-hour pharmacies to apply to reduce their hours to a minimum of 72 hours / week subject to certain restrictions. Any existing core opening hours must remain that are: - Monday to Saturday between 5pm and 9pm; - Sunday between 11am and 4pm, and - Sunday's total opening hours (i.e., the existing, total core opening hours on Sundays must remain). There are 8, 100-hour pharmacies in Stockton on Tees. Since the change in regulations 6 of the 8 pharmacies have reduced their hours to between 72-90 hours / week. 2 of our 100 pharmacies remain open 100 hours / week.

An updated map has been produced and will be published.

An updated pharmaceutical list will be published alongside the updated map.

6. This report also serves to provide notice from the HWB that the 2022 PNA is now undergoing review in-line with the extended Regulatory requirement. Whilst the PNA review process is on-going, the HWB will continue to monitor any changes to availability of pharmaceutical services.
7. A Stockton- PNA Steering Group will be established to oversee the review and production of the updated PNA. The Health and Well Being Board will be kept updated on its progress.



## **FINANCIAL IMPLICATIONS**

8. No direct financial implications

## **LEGAL IMPLICATIONS**

9. The NHS Act (the “2006” Act), amended by the Health and Social Care Act 2012, sets out the requirements for HWBs to develop and update PNAs and gives the Department of Health (DH) powers to make Regulations.

## **RISK ASSESSMENT**

10. See legal implications above.

## **COMMUNITY IMPACT IMPLICATIONS**

11. The aim of the PNA is to assess the pharmaceutical services required to meet the needs of the local population, taking account of demographic change and the current and future health needs in Stockton-on-Tees.

## **COUNCIL PLAN POLICY PRINCIPLES AND PRIORITIES**

12. The PNA will be reviewed with due consideration of the Stockton-on-Tees Joint Health and Wellbeing Strategy and Council Plan.

## **CONSULTATION, INCLUDING WARD/COUNCILLORS**

13. The review of the PNA includes a formal consultation requirement which is defined in the regulations. All relevant local stakeholders will be consulted as part of this process.

**Name of Contact Officer: Jo Linton**

**Post Title: Pharmaceutical Adviser**

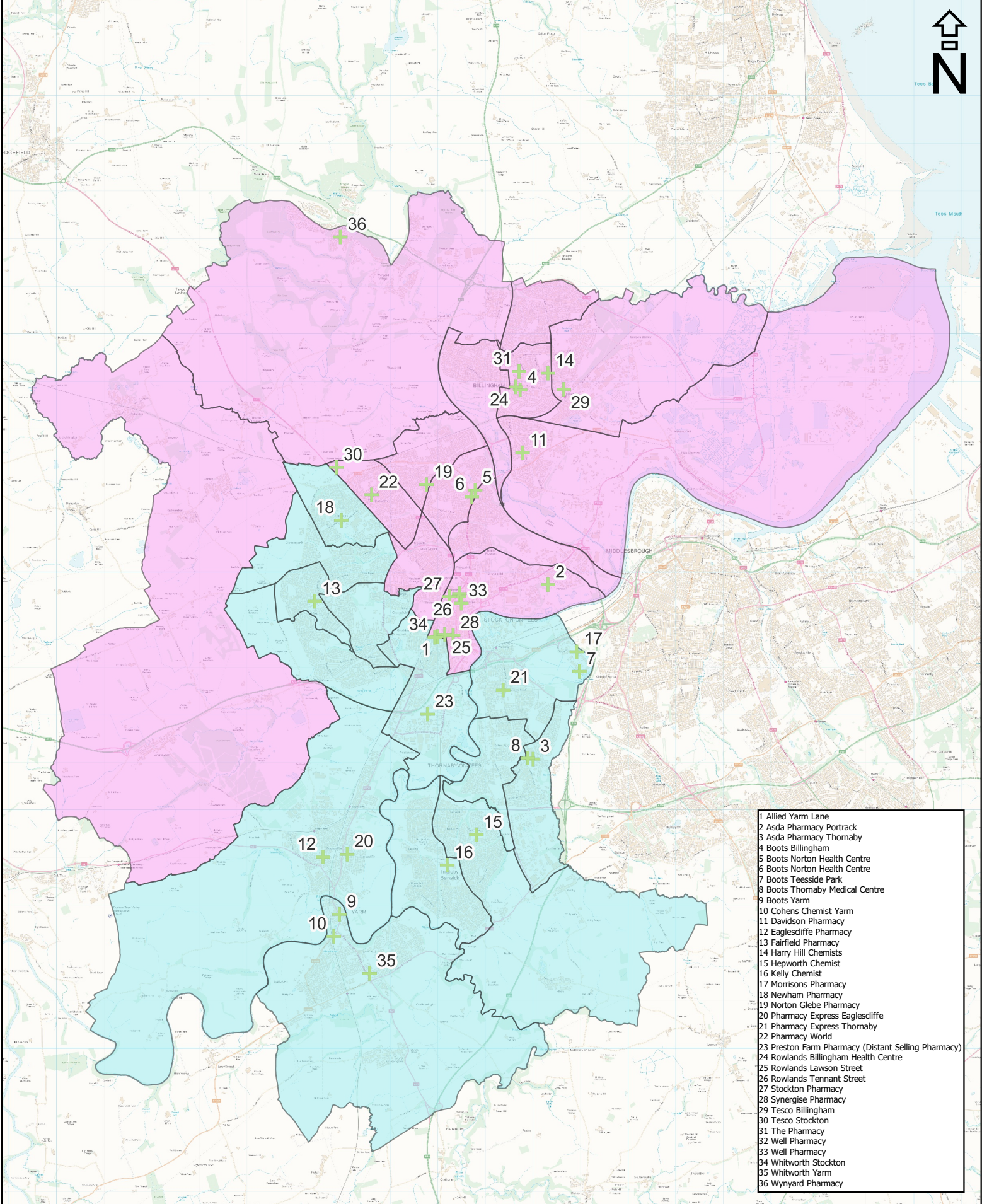
**Telephone No:**

**Email address: Joanne. Linton@stockton.gov.uk**

---

<sup>i</sup> Available at <http://www.legislation.gov.uk/uksi/2013/349> and hereafter referred to as the Regulations

This page is intentionally left blank



- 1 Allied Yarn Lane
- 2 Asda Pharmacy Portrack
- 3 Asda Pharmacy Thornaby
- 4 Boots Billingham
- 5 Boots Norton Health Centre
- 6 Boots Norton Health Centre
- 7 Boots Teesside Park
- 8 Boots Thornaby Medical Centre
- 9 Boots Yarm
- 10 Cohens Chemist Yarm
- 11 Davidson Pharmacy
- 12 Eaglescliffe Pharmacy
- 13 Fairfield Pharmacy
- 14 Harry Hill Chemists
- 15 Hepworth Chemist
- 16 Kelly Chemist
- 17 Morrisons Pharmacy
- 18 Newham Pharmacy
- 19 Norton Glebe Pharmacy
- 20 Pharmacy Express Eaglescliffe
- 21 Pharmacy Express Thornaby
- 22 Pharmacy World
- 23 Preston Farm Pharmacy (Distant Selling Pharmacy)
- 24 Rowlands Billingham Health Centre
- 25 Rowlands Lawson Street
- 26 Rowlands Tennant Street
- 27 Stockton Pharmacy
- 28 Synergise Pharmacy
- 29 Tesco Billingham
- 30 Tesco Stockton
- 31 The Pharmacy
- 32 Well Pharmacy
- 33 Well Pharmacy
- 34 Whitworth Stockton
- 35 Whitworth Yarm
- 36 Wynyard Pharmacy



Map Produced by Planning and Performance

Stockton-on-Tees Borough Council  
 Municipal Buildings, Church Road,  
 Stockton-on-Tees TS18 1LD  
 Telephone: (01642) 393939

Title

Stockton-on-Tees PNA  
 Localities 2022 and  
 Pharmacies (updated)

This page is intentionally left blank

## HEALTH AND WELLBEING BOARD - FORWARD PLAN

27 March 2024	<ul style="list-style-type: none"> <li>• BCF Update (<b>Yvonne Cheung</b>)</li> <li>• Integrated Mental Health Strategy Group (<b>Sarah Bowman Abouna/Tanja Braun</b>) <b>Possibly April</b></li> <li>• Domestic Abuse Steering Group Update (<b>Sarah Bowman Abouna, Mandy Mackinnon</b>)</li> <li>• PNA Update – Pharmacy needs update (<b>Joanne Linton/ Sarah Bowman-Abouna</b>)</li> <li>• Members’ Updates</li> <li>• Forward Plan</li> </ul>
April 2024	<ul style="list-style-type: none"> <li>• Health and Wellbeing Partnerships’ Update (<b>Partnership Chairs</b>)</li> <li>• Best Start In Lige (<b>Jane Smith</b>)</li> <li>• Members’ Updates</li> <li>• Forward Plan</li> </ul>
May 2024	<ul style="list-style-type: none"> <li>• Physical Activity and Healthy weight steering group update (May and November) (<b>Sarah Bowman Abouna/Tanja Braun</b>)</li> </ul>

### To be scheduled:

- SEND Strategic Action Plan (**Joanne Mills**) **New Year**
- Multiple Complex Needs – Peer Advocacy Pilot (**Sarah Bowman Abouna/Mandy Mackinnon**)
- Pharmacy Provision/ Update on Community Pharmacies (**ICB**)
- Primary Care Update (GPs, dentists and optometry) (**ICB – Emma Joyeux**)
- Immunisations and Screening – April – as part of HPC Update (**Nicola Bell, Dawn Powell**) **April 24**
- Fairer Stockton on Tees (**Jane Edmonds, Haleem Ghafoor**)

### Scheduled items Frequency:

- Domestic Abuse Steering Group Update (March and September) (**Sarah Bowman Abouna/Mandy McKinnon**)

- Alcohol Strategic Group Update (June and December) (**Sarah Bowman Abouna/Mandy McKinnon**)
- Integrated Mental Health Strategy Group (May and November) (**Sarah Bowman Abouna/Tanja Braun**)
- Tobacco Alliance Update (Usually June and December) (**Sarah Bowman Abouna/Mandy McKinnon**)
- SEND Strategic Action Plan (Usually May and November) (**Joanne Mills**)
- Health Protection Collaborative Update (Usually January, April, July and October) (**Sarah Bowman, Tanja Braun, Rob Miller**)
- Health and Wellbeing Partnerships' Update (Usually March and September) (**Partnership Chairs**)